



## Technical Datasheet

### Data reading and verification capabilities, technical values and compliances –

you can find these all in the following specifications list.

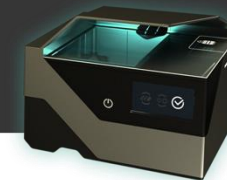
### Imaging

|                                    |   |
|------------------------------------|---|
| Active Scan Area                   | 129 mm × 89 mm  |
| Illumination Sources               | LED visible white, IR (B900), UVA   |
| Image Resolution                   | 700 PPI   |
| Sensor                             | 12 Mpixel   |
| Provided Images                    | Visible, IR, UV (UVA), OVD image, glare-free image – oblique (edge light) |
| Image Formats                      | BMP, JPG, JPG2000 and PNG   |
| Image Color Depth                  | 24 bits/pixels [RGB, 8 bits/pixels (IR image)]                            |
| Automatic Image Enhancement        | YES – Hardware-accelerated  |
| Automatic Document Detection (ADD) | YES   |
| Reflection Removal (RR)            | YES   |
| Adaptive Light Control (ALC)       | YES   |



## Programming & Interfaces

|   |  |
|---|--|
| Supported Operating Systems                     | USB mode: Windows & Linux  |
| Software Development Kit (SDK)                  | USB mode: Complete SDK including DLLs and demo programs  |
| Programming Languages                           | USB mode: C/C++, C#, Visual Basic 6.0, Delphi, VB.NET, Java  |
| General Interfaces                              | In USB mode: ARH native, Twain, PC/SC and BioAPI 2.0, Acuant AssureIDTM<br>In network mode: HTTP/HTTPS for accessing the reader, WS, WSS, FTP, SFTP, FTPS, SMB, SMTP, WebDav, Local Database for result upload |
| RFID hardware                                   | Adaptive Recognition RFID hardware (latest generation)   |
| RFID functions                                  | ICAO Doc. 9303 LDS 1.7, ISO 18013 (Driver License)<br>PKI 1.1, BAC, EAC, EAC2.0, PACE, PACE-CAM, AA, PA, TA, CA, BAP, EAP  |
| Authentication included in standard SDK         | Authentication included in standard SDK - data consistency checks (MRZ, barcode, RFID), IR B900 ink and UV dull paper check.   |
| VIZ OCR data reading option                     | VIZ and non-ICAO document reading  |
| VIZ OCR + Authentication software module option | Automated verification based on document specific security features in visible white, IR and UVA   |
| PC Connection                                   | USB 3.0 (USB 3.1 Gen 1)  |
| Status indicators                               | OLED graphical display   |
| Firmware Upgrade                                | USB - optionally via network   |

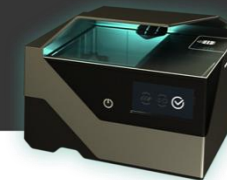


## Reading Capability

|   |  |
|---|--|
| ICAO MRZ Reading                                    | ICAO compliant documents per ICAO 9303 specification Part 1, Part 1 v1 Part 2, Part 3 and Part 3v3 for Type ID-1, ID-2 and ID-3 MRZ Optical Character Recognition  |
| VIZ Reading Option                                  | Available with Adaptive Recognition VIZ OCR software   |
| Barcode Reading                                     | 1D: UPC-A, EAN8, EAN13, Code39, Code128, ITF,<br>2D: PDF 417, Data Matrix, QR Code, Aztec Code, Interlaced 2 of 5 (ITF),<br>AAMVA compliant PDF417 and IATA BCBP   |
| Contactless IC (RFID) and Contact Smart Card Option | Reading and writing contactless ICs according to: ISO 14443 Type A & B, BSI TR-03105<br>All standardized rates up to 848 Kbps<br>Contact Smart Card: according to ISO 7816 and EMV 4.2/4.3, ETSI TS 102 221, supports Class A, AB and C smart cards<br>T=0, T=1 protocol support |


## Mechanical data

|  |  |
|--|--|
| Internal processor                     | Multi-core processor   |
| Size (width × depth × height) / Weight | 178mm × 203mm × 157mm / 2.25 kg  |
| Power supply                           | Universal external power supply, 100-240 V AC, 50/60 Hz<br>POE+ (available only in N and F versions) |
| Case                                   | Sturdy ABS-PC plastic & Aluminium  |




|                       |  |
|-----------------------|--|
| Security              | Kensington® security slot  |
| Maintenance           | Maintenance-free operation   |
| Warranty              | 3-year warranty (can be extended)  |
| Operating temperature | 5 °C to 40 °C (45 °F to 113 °F) Operating humidity 0-90 % (non-condensing) |

## Adaptive Recognition

 Adaptive Recognition **America**

 Adaptive Recognition **Hungary**

 Adaptive Recognition **Nordic**

 Adaptive Recognition **Singapore**

[www.adaptiverecognition.com/osmond](http://www.adaptiverecognition.com/osmond)

[www.adaptiverecognition.com](http://www.adaptiverecognition.com)



## Disclaimer

The information contained in this brochure is provided as is and without any warranties of any kind, whether expressed or implied, including but not limited to, implied warranties of satisfactory quality, fitness for a particular purpose and/or correctness. The contents of this brochure is for general information purposes only and do not constitute advice. Adaptive Recognition does not represent or warrant that the information and/or specifications contained in this brochure are accurate, complete or current and specifically stipulate that certain scanner details and specifications contained in this brochure may differ in available models. Therefore, Adaptive Recognition makes no warranties or representations regarding the use of the content, details, specifications or information contained in this brochure in terms of their correctness, accuracy, adequacy, usefulness, timeliness, reliability or otherwise, in each case to the fullest extent permitted by law.